

City Performance Plan Performance Indicators

Brighton and Hove
2012/13 Annual Results

Promoting resource efficiency and
enhancing the environment

City Performance Plan

- Partnership document
- Sets out the key outcomes we need to achieve in the city to support the longer term goals of the Sustainable Community Strategy
- Council led – managed on behalf of the strategic partnership and part of the city council performance and risk management framework
- Reported to the Brighton and Hove Strategic Partnership, City Management Board and Brighton and Hove City Council – papers released to P and R committee and now available.
- Structured by themes which broadly divide into housing, social care, education, economy, community safety, transport and sustainability (titled Promoting Resource Efficiency and Enhancing the Environment)

Promoting Resource Efficiency and Enhancing the Environment - framework

Low Carbon City

- Low carbon economy
- Low carbon homes and buildings
- Low carbon transport
- Increasing the use of renewable and sustainable energy - action plan only

A city adapting well to climate change

- Robust planning in place for climate change adaptation

Sustainable waste management

- Reduction of waste and increased levels of reuse, recycling and composting

Increase and conserve levels of biodiversity through work towards delivery of the Biosphere Reserve

- Increased habitat connectivity - action plan only
- Important species and habitats and sites are defined, conserved; their favourable conservation status achieved
- Measurable benefits to communities and the economy - action plan only

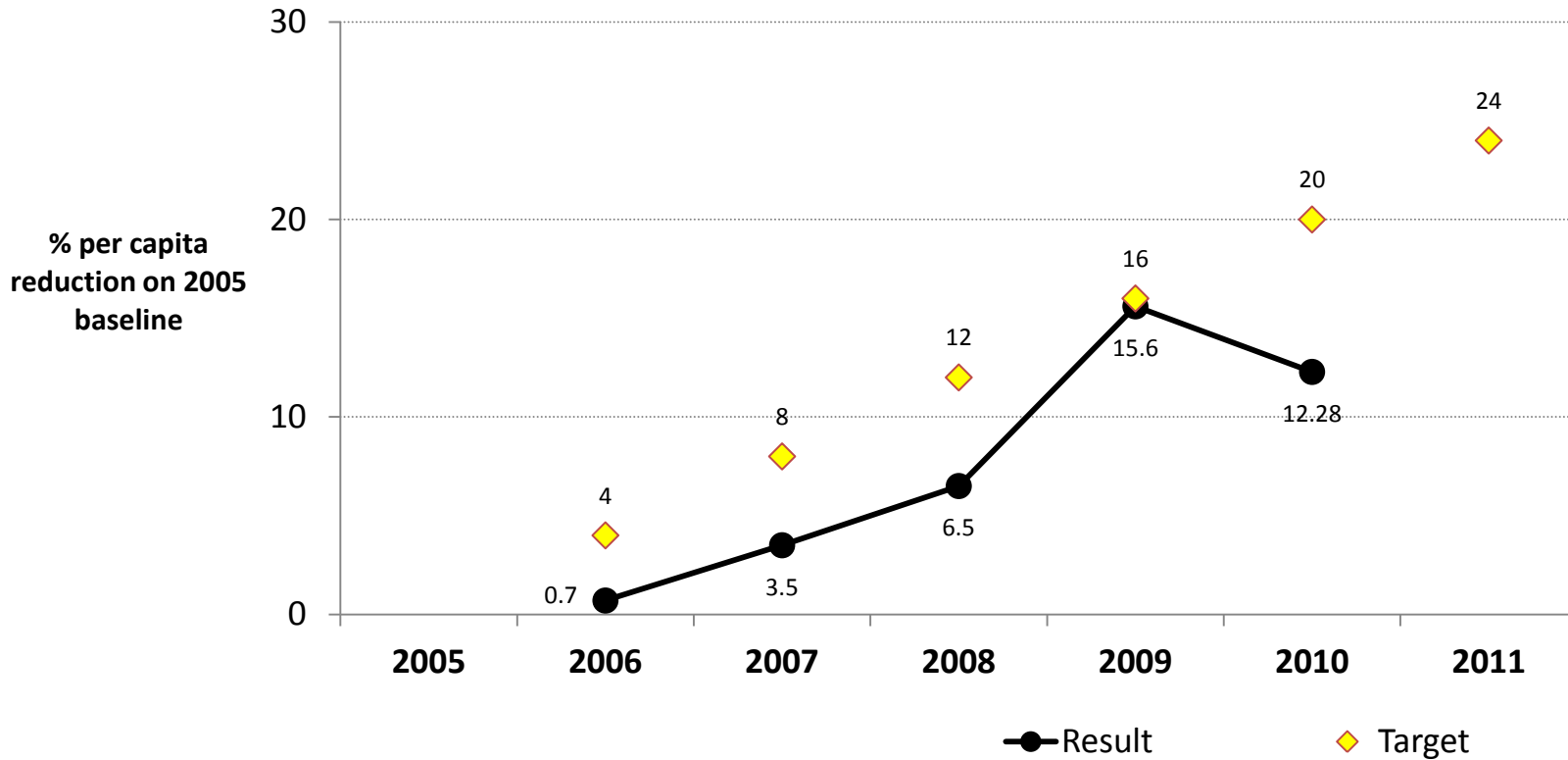
CPP action plan available

Updates are provided for each outcome, which cover:

- Progress made in 2012/13
- Future work planned
- Barriers to future performance

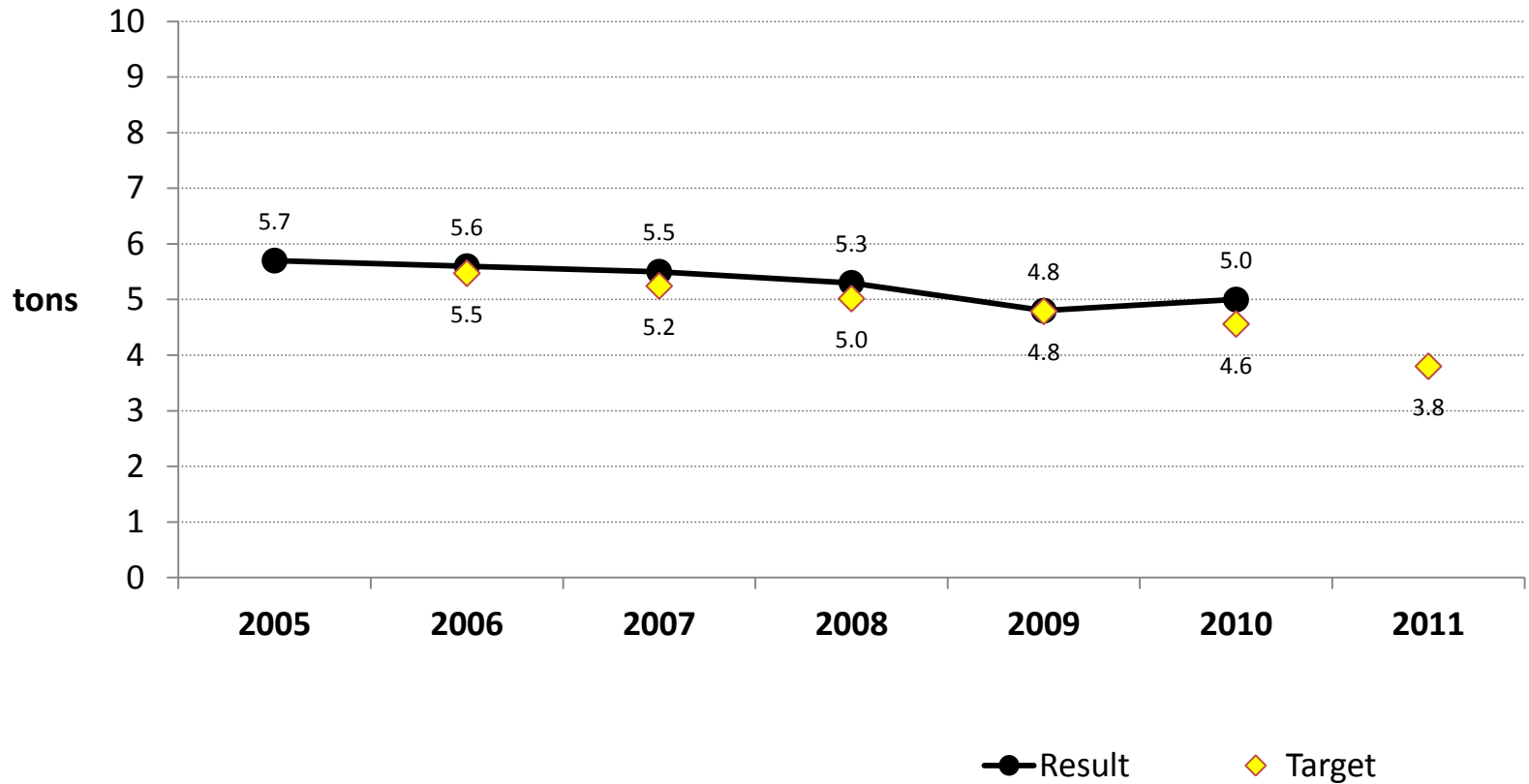
Outcome: Low Carbon City

The percentage reduction in per capita carbon dioxide emissions (previously NI 186)	2010 Target 20.00%	2010 Result 12.28%	 RED
---	-----------------------	-----------------------	--




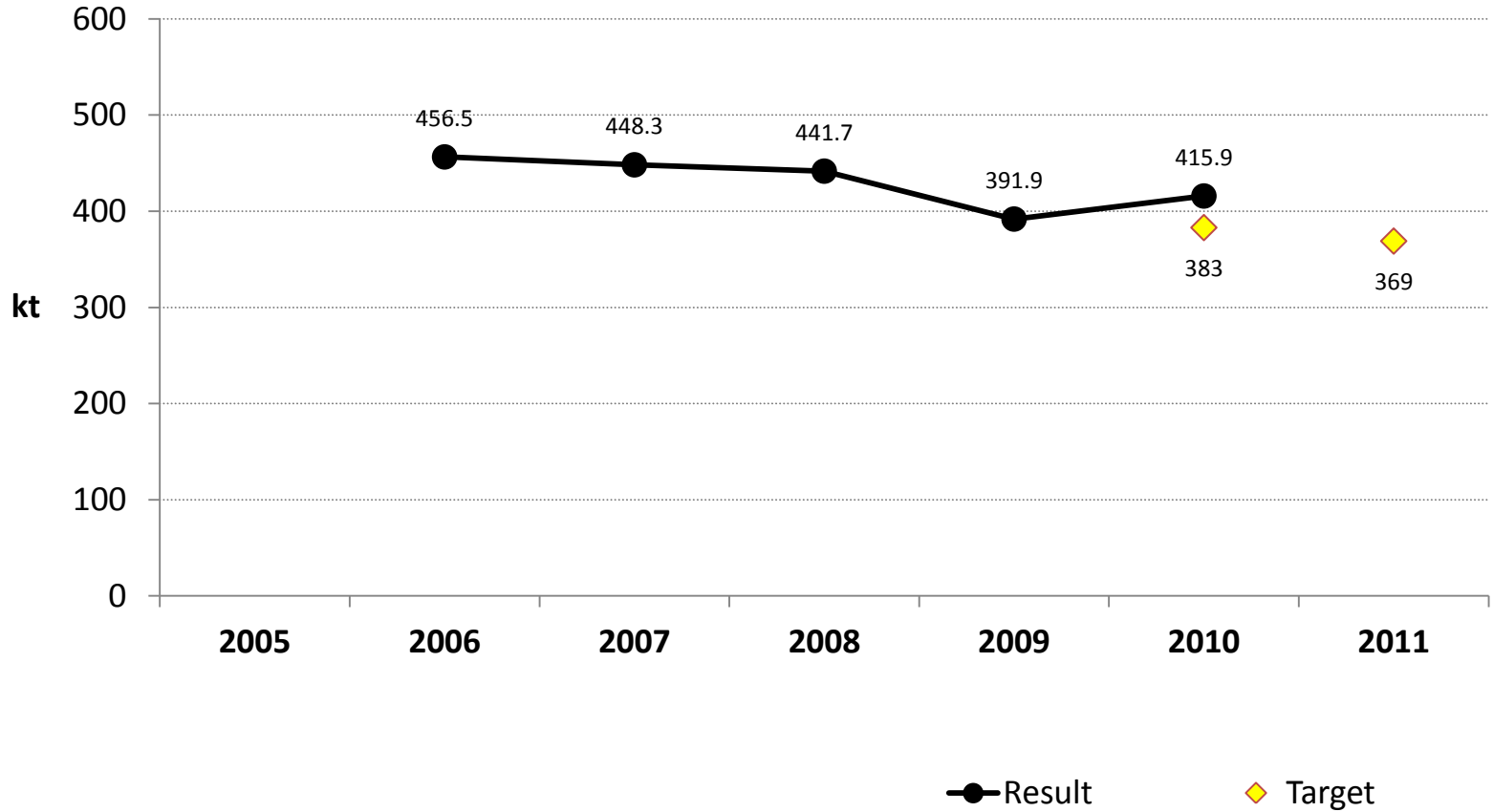
Outcome: Low Carbon City

Per capita carbon dioxide emissions	2010 Target 4.6 t	2010 Result 5.0 t	 RED
-------------------------------------	----------------------	----------------------	--




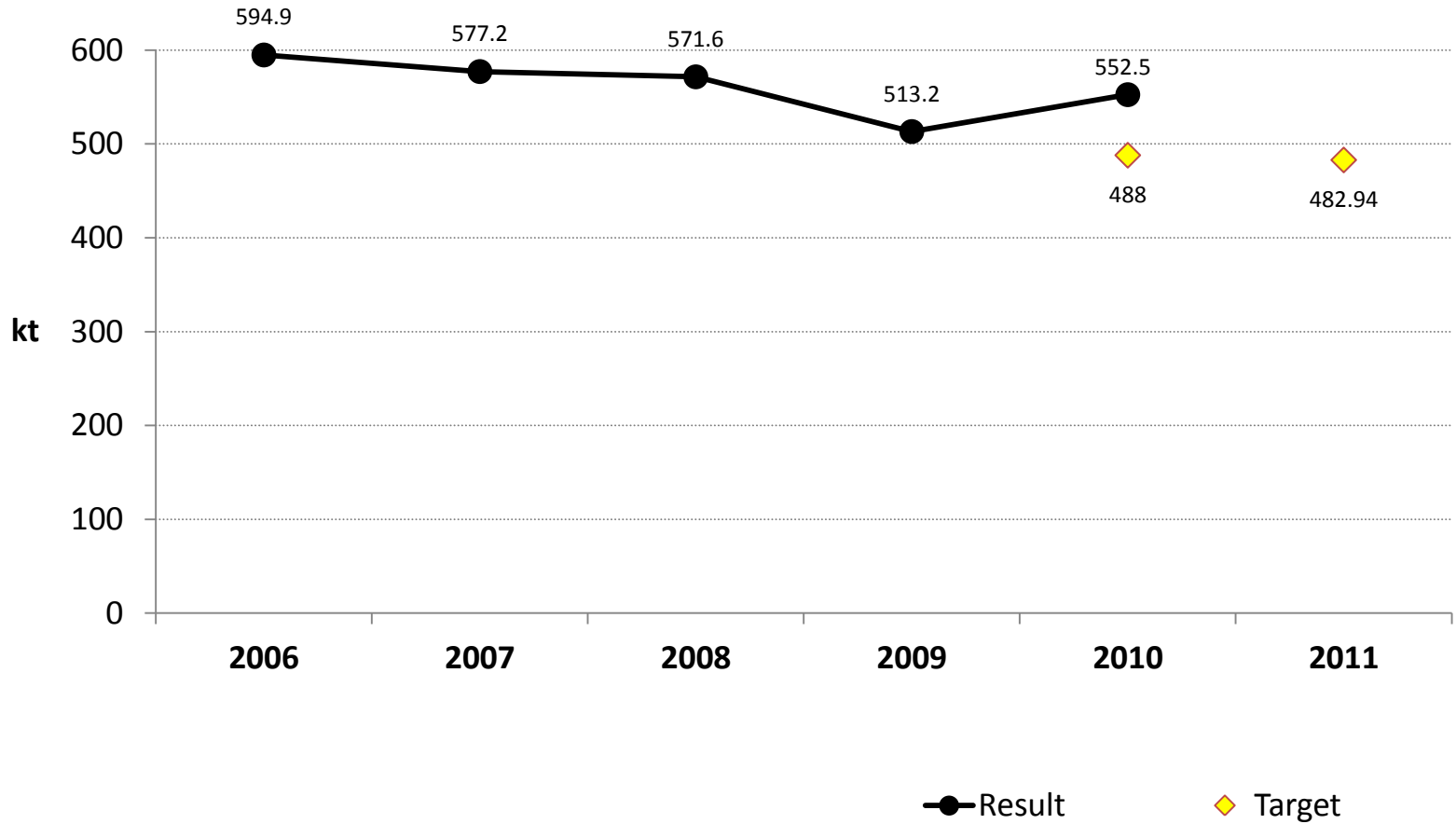
Outcome: Low Carbon City

Carbon dioxide emissions in Brighton and Hove - Commerce and Industry	2010 Target 383.0 kt	2010 Result 415.9 kt	 RED
--	--------------------------------	--------------------------------	---




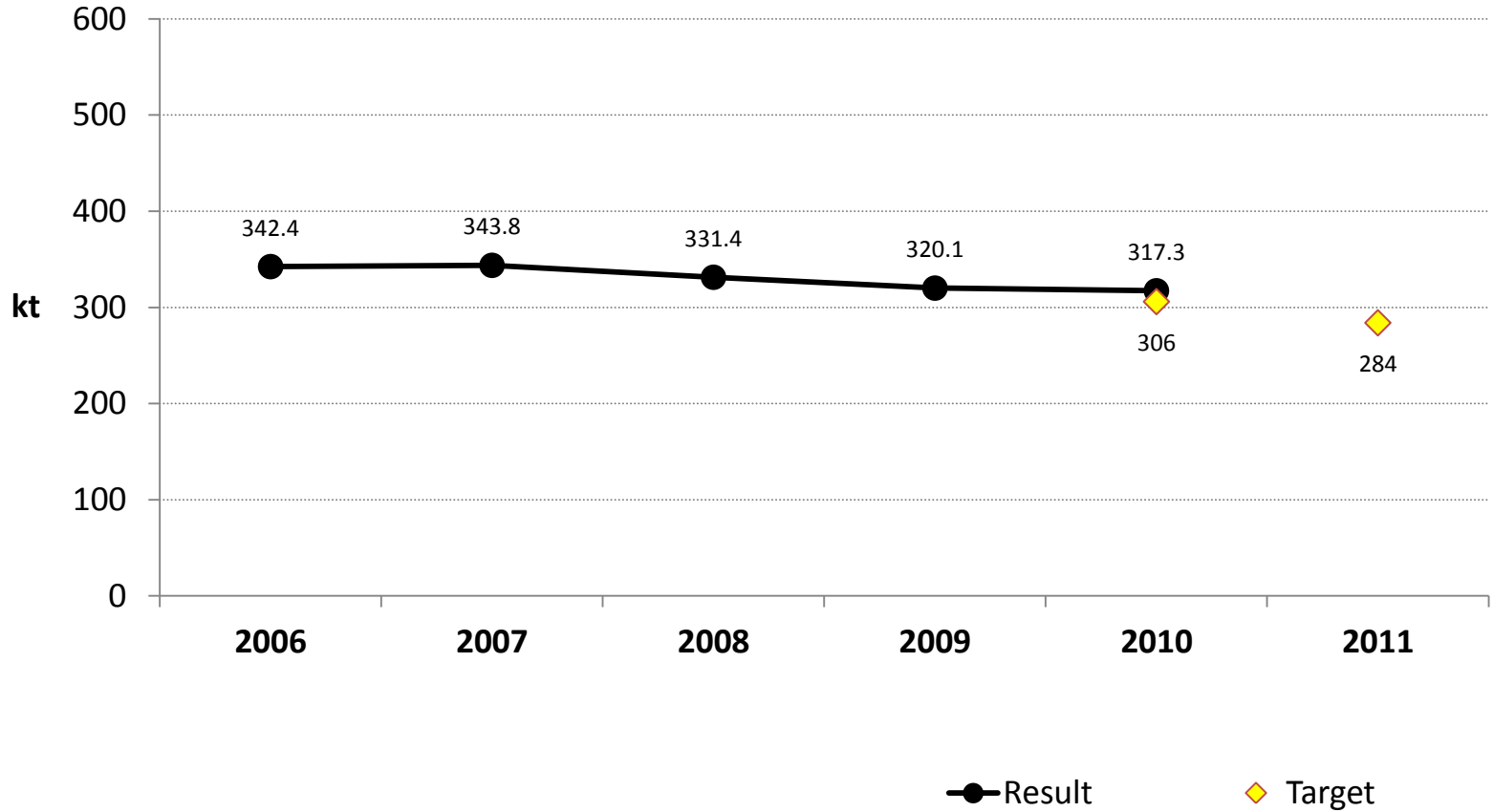
Outcome: Low Carbon City

Carbon dioxide emissions in Brighton and Hove - Domestic	2010 Target 488.0 kt	2010 Result 533.0 kt	 RED
---	--------------------------------	--------------------------------	---



Outcome: Low Carbon City


Carbon dioxide emissions in Brighton and Hove - Transport	2010 Target 306.0 kt	2010 Result 317.3 kt	 AMBER
--	--------------------------------	--------------------------------	---

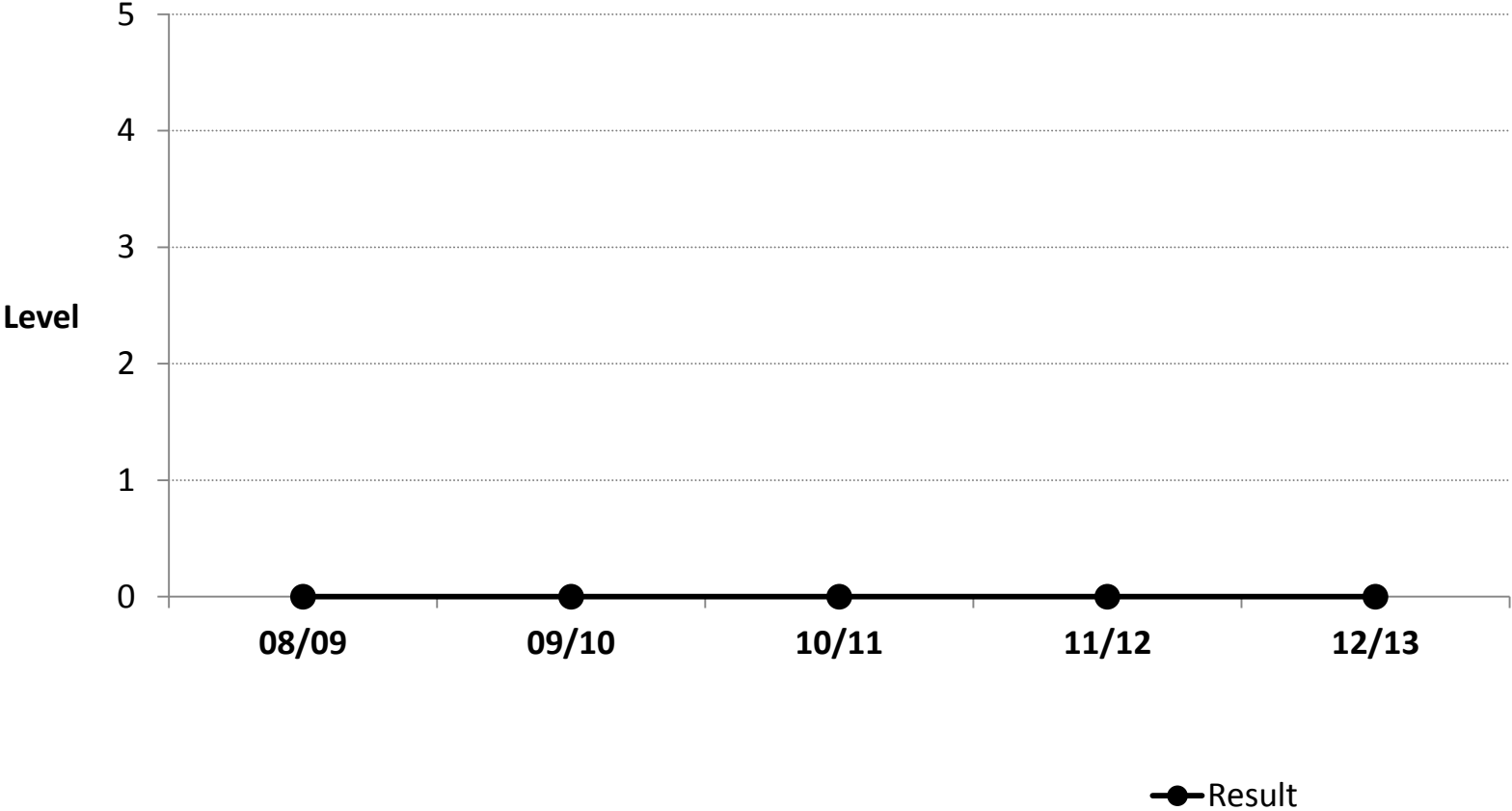


Low Carbon - Key messages

- Per capita emissions are not reducing to levels necessary to meet existing long term targets, or OPL targets which are more challenging still
- 2010 experienced particularly cold winters both at the beginning and end of the year. Which could explain poor performance in the domestic and industrial/commercial sectors – the primary reason for slowdown in performance.
- Results are roughly in line with but not as good as national and regional trends, with 2010 per capita reductions of 14.86% and 13.41% respectively, however performance is not as good as either.
- 2011 results are expected September 2013

Outcome: Robust planning in place for climate change adaptation


Planning to adapt to climate change	2011 Result Level 0	2012 Result Level 0	 AMBER
-------------------------------------	---------------------------	---------------------------	--

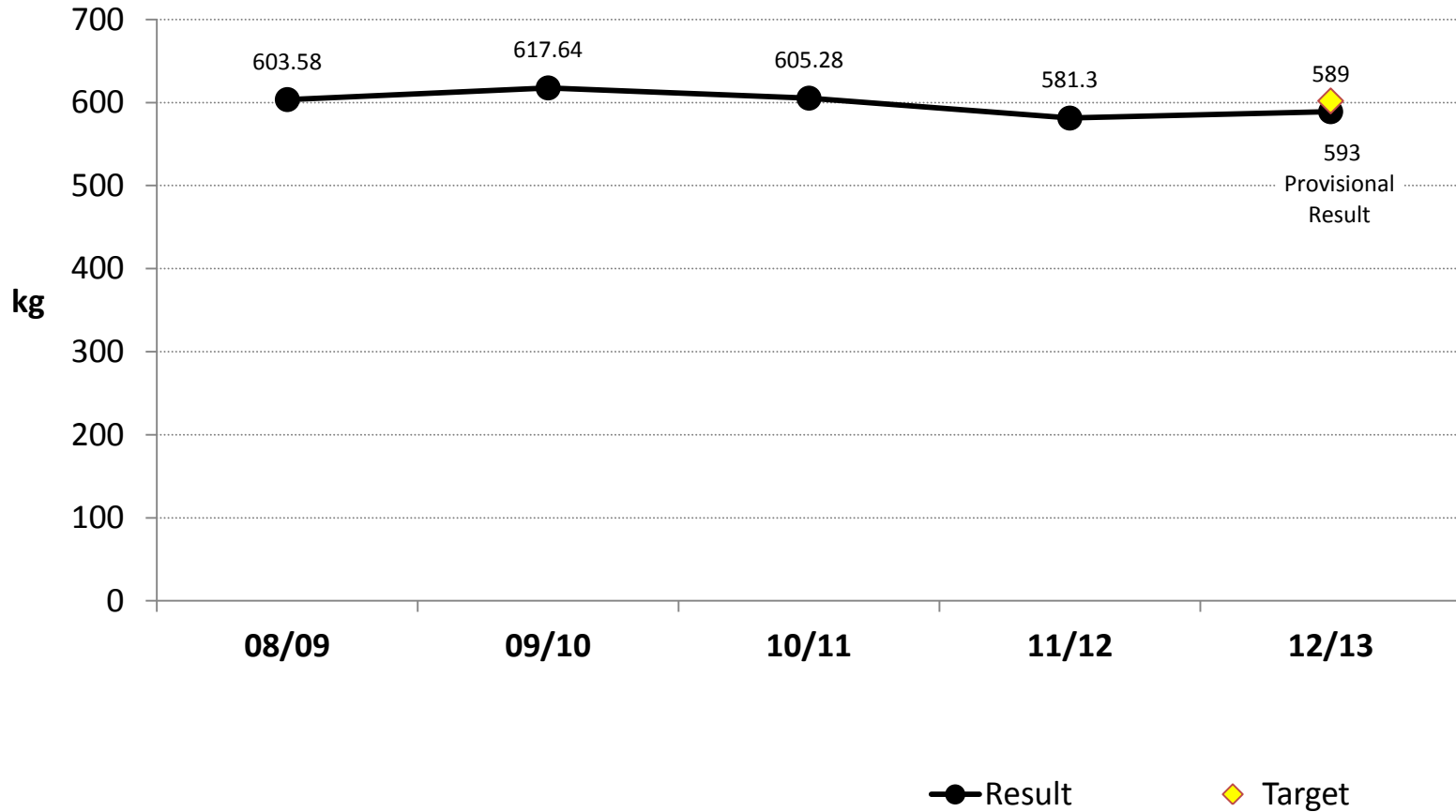


Planning to adapt to climate change - Key messages

- Though at Level 0, a number of actions at Level 1 have also been completed.
- The Authority has begun the process of assessing the potential threats and opportunities across its estate and services (for example, flood and coastal resilience plans, emergency planning, community risk registers/strategies etc) and has identified and agreed the next steps to build on that assessment in a systematic and coordinated way.
- Further work is necessary to develop/improve upon this indicator to give a truer account of the work being done. East Midlands approach may be worth considering - there current reporting is available.

Reduction of waste and increased levels of reuse, recycling and composting


Residual household waste per household (previously NI 191)	2012/13 Target 602 kg	2012/13 Provisional 593 kg	 GREEN
--	-----------------------	----------------------------	---

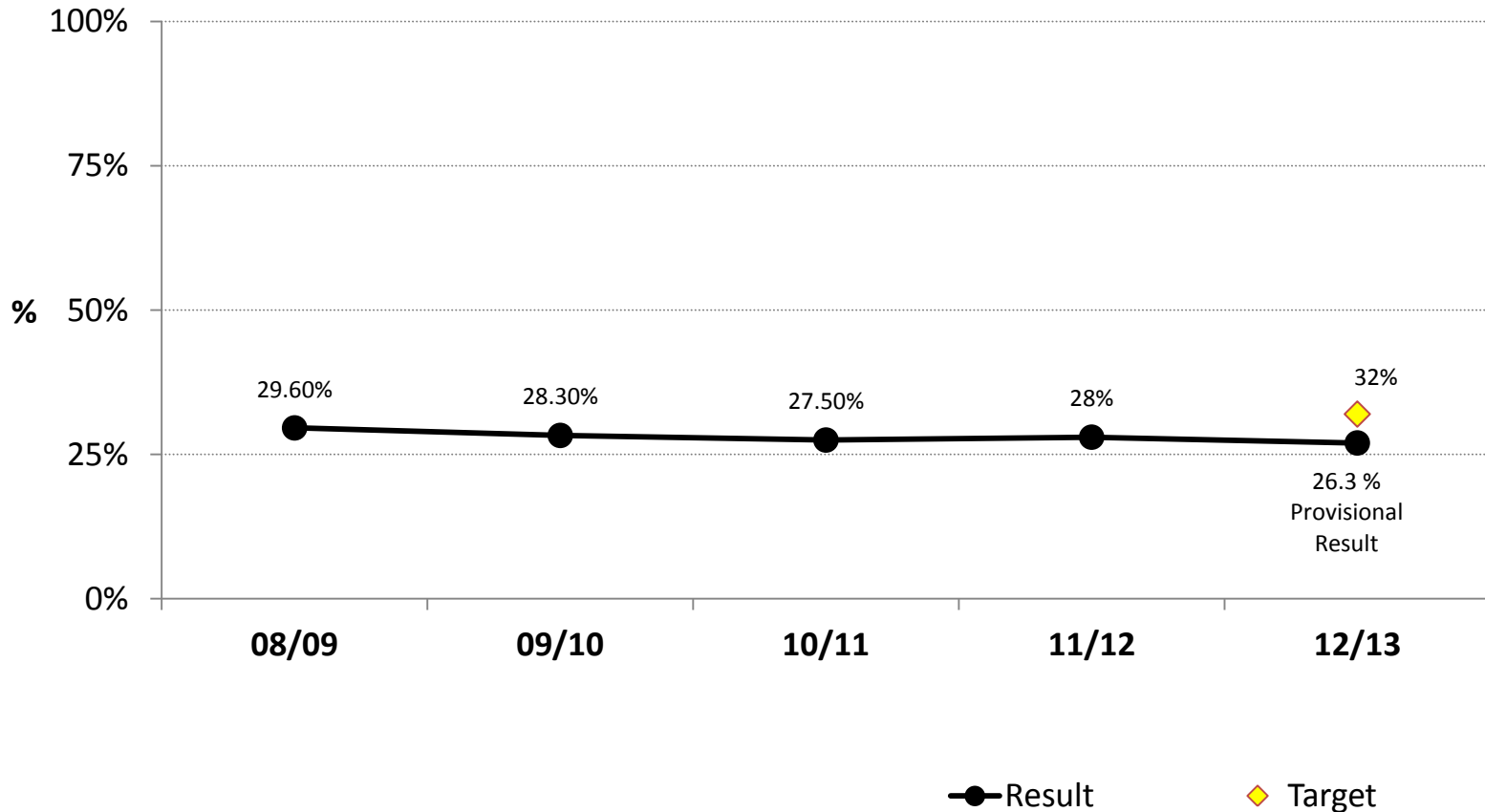


Residual household waste per household (previously NI 191) - Key messages

- Residual waste per household has been declining steadily since 2006/07. This result is based on provisional figures and may change following subsequent verification. The final result should be available by the end of July.
- Many factors affect the levels of waste arising and recycling rates which include;
 - a move by consumers from printed to electronic media
 - glass bottles becoming lighter weight
 - community composting schemes
 - home composting
 - waste awareness work with the food partnership.
- The economic downturn is also likely to have an effect through reducing overall levels of consumption.

Outcome: Reduction of waste and increased levels of reuse, recycling and composting


Percentage of household waste sent for reuse, recycling and composting (previously NI 192)	2012/13 Target 32.0%	2012/13 Result 26.3%	 RED
--	-------------------------	-------------------------	--

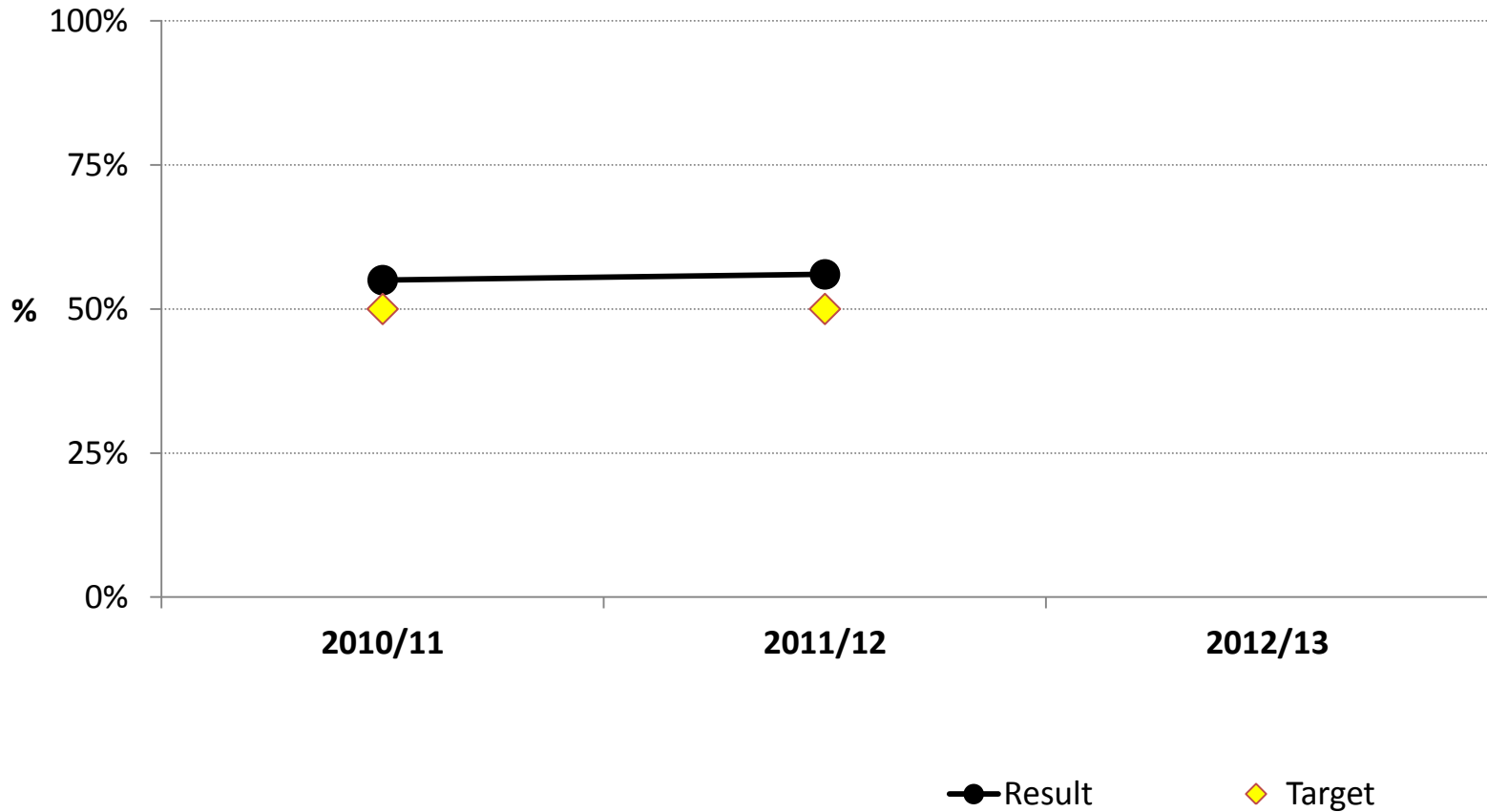


Percentage of household waste sent for reuse, recycling and composting (previously NI 192) - Key messages

- The recycling rate forecast is below target based on provisional figures and has declined slightly.
- Signed off annual result is expected by July 2013.
- Recycling rates across the country as a whole appear to be levelling off.
- Communal recycling in the city centre is expected to increase recycling rates by 3%. Proposals for communal recycling are currently out to consultation.
- *As mentioned with waste reduction, many factors affect the levels of waste arising and recycling rates; these include a move by consumers from printed to electronic media, glass bottles becoming lighter weight, community composting schemes, people home composting and waste awareness work with the food partnership. The economic downturn is also likely to have an effect through reducing overall levels of consumption.*

Important species and habitats and sites are defined, conserved; their favourable conservation status achieved

Local Wildlife Sites in positive conservation management	2011/12 Target 50%	2011/12 Result 56%	 GREEN
--	--------------------	--------------------	--



Local Wildlife Sites in positive conservation management - Key messages

- Improvements to Local Wildlife Site management have been achieved by re-introducing sheep grazing to old, species rich chalk downland sites, funded through the Higher Level Stewardship scheme. Other downland Local Wildlife Sites are being restored by working in partnership with the South Downs National Park, using Nature Improvement Area funding.
- 2012/13 data available 30th September 2013
- The measure of progress in terms of conservation managements would be better assessed through completion of the approved One Planet Living action for Landuse and Wildlife which is reported to the OPL board.

Future of the City Performance Plan

- All of these goals and more will be managed through One Planet Living
- CPP will be reviewed following the refresh of the Sustainable Community Strategy
- May change in format and/or content possibly placing more focus key risks facing the City.

For more information please contact dean.austyn@brighton-hove.gov.uk